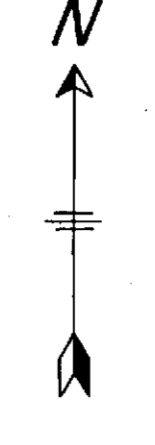


Town of Wiggins
 My Jan
 1975

WIGGINS, COLORADO

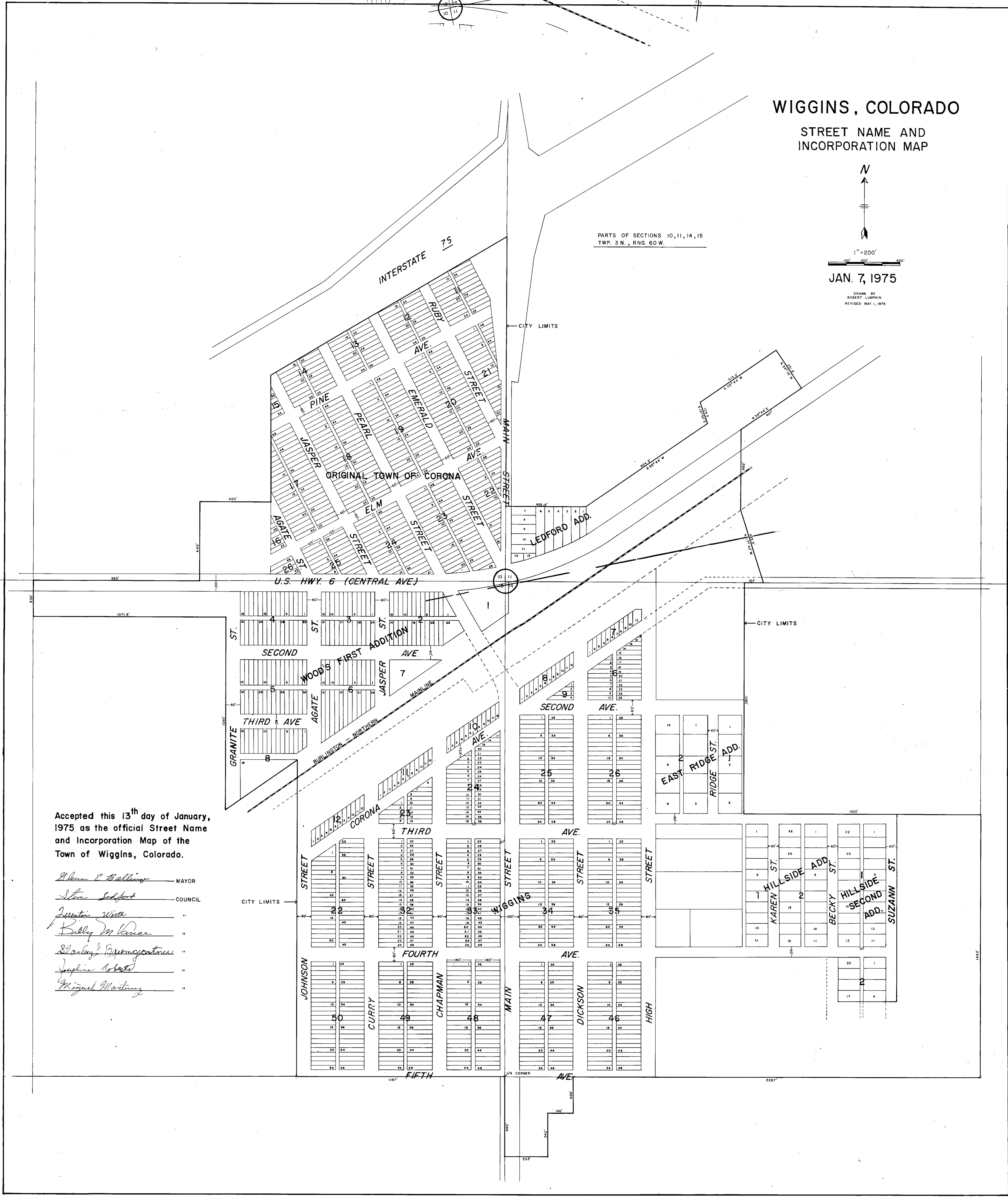
STREET NAME AND INCORPORATION MAP



1" = 200'
 JAN. 7, 1975

DRAWN BY
 ROBERT LUMPHEN
 REVISED MAY 1, 1975

PARTS OF SECTIONS 10, 11, 14, 15
 TWP. 3 N., R. 60 W.

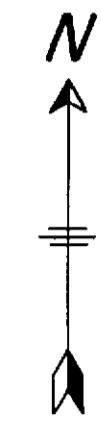


Accepted this 13th day of January,
 1975 as the official Street Name
 and Incorporation Map of the
 Town of Wiggins, Colorado.

- Alvan S. Halling* MAYOR
- Steve Sclford* COUNCIL
- Justin Wade* "
- Billy W. Lerner* "
- Stanley B. Bremerstrom* "
- Joseph Hobbs* "
- Miguel Martinez* "

WIGGINS, COLORADO

STREET NAME AND
INCORPORATION MAP

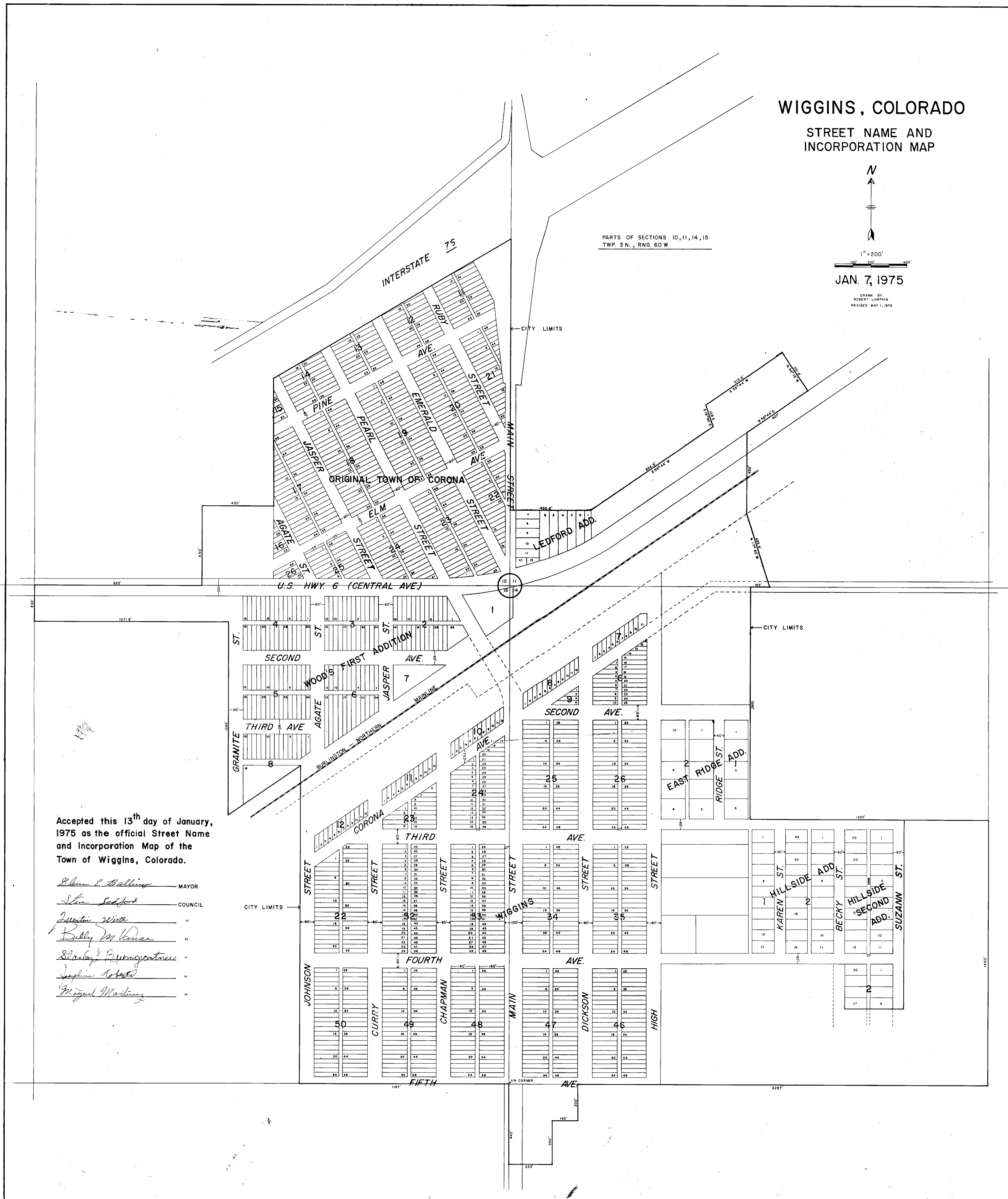


1" = 200'

JAN. 7, 1975

DRAWN BY
ROBERT LUMPKIN
REVISED MAY 1, 1975

PARTS OF SECTIONS 10, 11, 14, 15
TWP. 3 N., RNG. 60 W.



Accepted this 13th day of January,
1975 as the official Street Name
and Incorporation Map of the
Town of Wiggins, Colorado.

Alvin P. Ballinger MAYOR
Steve Sedford COUNCIL
Arnette White "
Bobby W. Vance "
Shirley E. Cunningham "
Joyline Roberts "
Miguel Martinez "